



# MONTHLY MEMBERSHIP PROGRESS REPORT

District 1 CS

Results as of: 08/31/2018

GMT: STEVE ANTON

LOCATION ILLINOIS

GMT CA

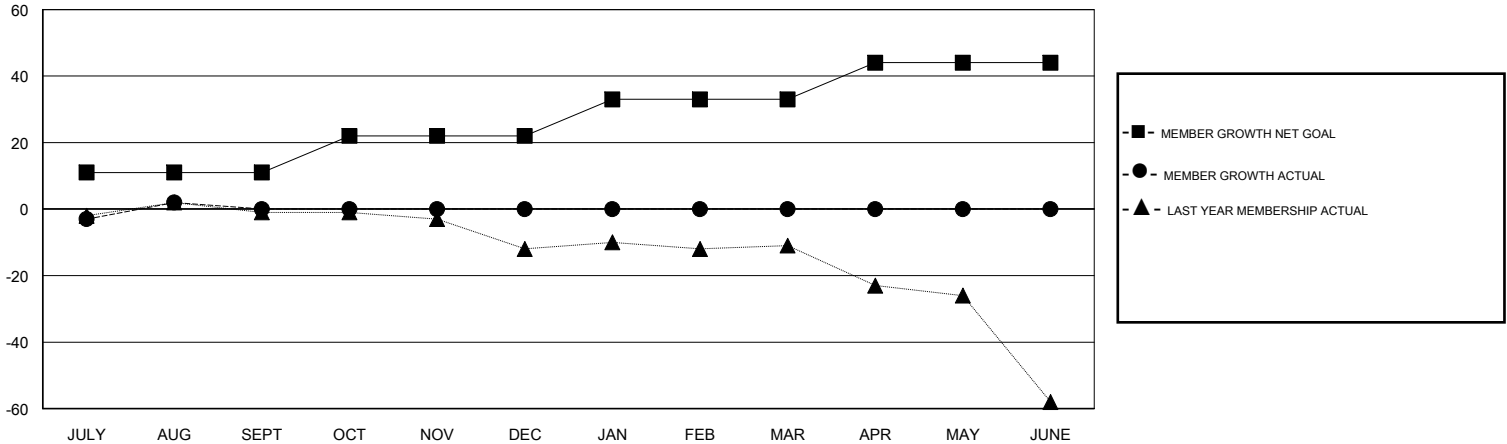
Clubs			
RESULTS FOR 2018-2019			
QUARTER	NEW CLUB GOAL	NEW CLUBS	DROPPED CLUBS
JULY/AUG/SEPT	1	0	0
OCT/NOV/DEC	1	0	0
JAN/FEB/MAR	1	0	0
APR/MAY/JUNE	1	0	0

Members			
RESULTS FOR 2018-2019			
QUARTER	MEMBER GROWTH NET GOAL	MEMBER GROWTH ACTUAL	DROPPED MEMBERS ACTUAL (including transfers)
JULY/AUG/SEPT	11	10	7
OCT/NOV/DEC	11	0	0
JAN/FEB/MAR	11	0	0
APR/MAY/JUNE	11	0	0

GOALS AND ACTUAL NEW CLUBS CUMULATIVE



GOALS AND ACTUAL MEMBERS CUMULATIVE



DROPPED CLUBS: 0	5 CLUBS OF 30 ADDED 1 OR MORE NEW MEMBERS	<u>GENDER DISTRIBUTION</u> MALE 527 (74.44%) FEMALE 181 (25.56%) Women Percentage Fiscal Year Goal: 50%
<u>DROPPED MEMBERS</u> DECEASED 2 CLUB CANCELLED 0 OTHER 5 TOTAL 7	<a href="#">CLICK HERE FOR CUMULATIVE MEMBERSHIP DATA</a>	TOTAL FAMILY UNIT MEMBERS 87 FAMILY MEMBERS PAYING HALF DUES 45